

# AQUABOX Systems®



THE ULTIMATE SOLUTION TO COLD WATER BOOSTING

## SPACE SAVER Series

PROUDLY BY

**Southern Pumps Ltd**



# SPACE SAVER Series®

COMPACT RANGE



## FEATURED HIGHLIGHTS

- **Compact design** for space-restricted-applications
- Hassle free **"Plug n' Play"** installation.
- Constant **pressure** and **flow**
- **CE Approved potable water Tank**, that is non-corrosive, robust, and designed with built-in strengthening ribs.
- **Dry run protection** Controller with pressure gauge.
- **Back-up diaphragm** to compensate for small leaks or drips in the hydraulic system.
- **Shut-off valve** as standard.
- Made with Eco-friendly materials and products.
- Aquabox Systems **2 Year limited warranty**.

The All NEW **Aquabox Systems - Space Saver Series** for all your Domestic and Commercial clean water applications.

It's sleek compact system designed for storing clean and potable water with reliable constant pressure.

The **Aquabox Systems - Space Saver Series** makes plumbing easy, hassle free, creating more space and less noise for greater comfort.

## Lowara Scuba Series

The Lowara SC205 Scuba, is a 5" Close Coupled Multistage submersible pump (0.55kw) with Electrical motor cooled by pumped liquid which is WRAS compliant.

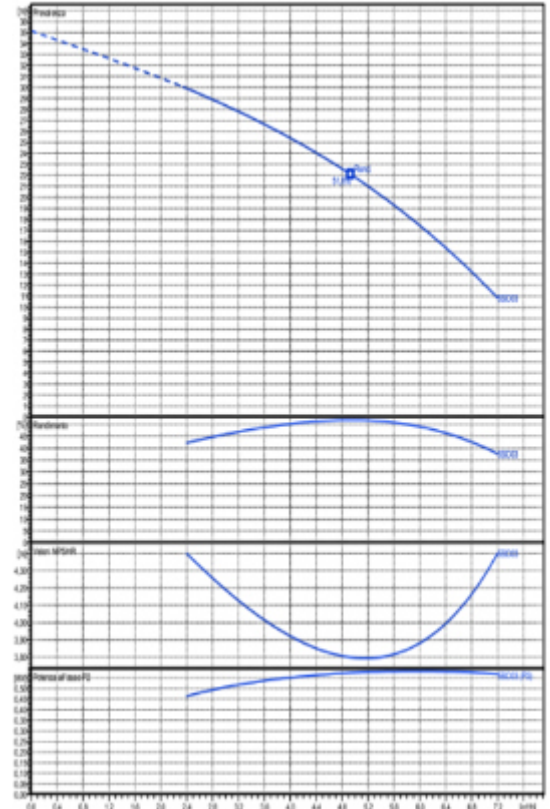
The Lowara Scuba can be installed in vertical and horizontal positions. The pumps low noise tolerance, stainless steel structure, "Double Mechanical Seals" system and engineered motor is designed for constant use.

## Aquabox Systems Controller

The Aquabox Systems Controller starts the pump at the minimum water request and protects against dry running.

Inspection-able and integrated check valve, integrated pressure gauge, smart auto-reset and anti-seize function are standard.

Compact, adjustable, smart.



## Additional Accessories

Tank drip trays   Tank insulation jackets   Tank acoustic mats   8lt In/Out pressure tanks

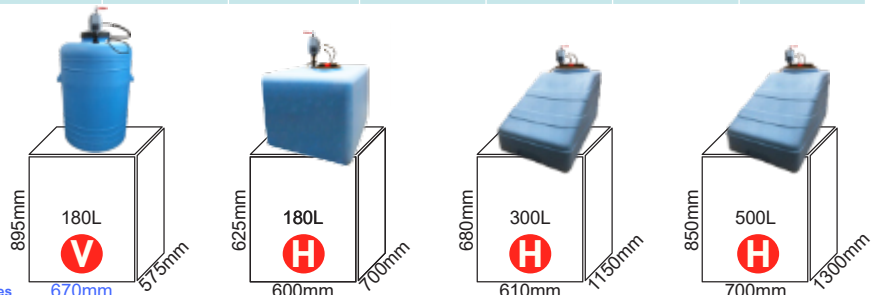
## ORDERING INFORMATION

Model	Capacity Ltr	m³/h (min)	m³/h (max)	Head (Qmin)	Head (Qmax)	Bar	kW	HP	Volt	Phase
<b>Cylindrical Space Saver</b>										
<b>SSC180</b>	180	2.4	7.2	29.9	10.8	3	0.55	0.75	220-240	1
<b>Rectangular Space Saver</b>										
<b>SSR180</b>	180	2.4	7.2	29.9	10.8	3	0.55	0.75	220-240	1
<b>Triangular Space Saver</b>										
<b>SST300</b>	300	2.4	7.2	29.9	10.8	3	0.55	0.75	220-240	1
<b>Triangular Space Saver</b>										
<b>SST500</b>	500	2.4	7.2	29.9	10.8	3	0.55	0.75	220-240	1

## Space Saver Series Tanks

The Space Saver Series Tanks are manufactured from medium density recyclable polyethylene for endurance and strength, they are compact and strong.

The Tanks light weight and stable design makes for easy transportation and installation.



Note: Diameter includes handles

Note: Please allow **500mm** clearance for Horizontal tanks and **750mm** clearance for Vertical tanks for easy pump removal.

Southern Pumps Ltd, Unit 18, City North Business Park, Dublin Hill, Cork

Tel: +353 (0) 21 430 3946

info@aquaboxsystems.ie

www.aquaboxsystems.ie

Note: The data given in the brochure do not represent any warranty technological progress.