

AQUABOX Systems

THE ULTIMATE SOLUTION TO COLD WATER BOOSTING

Versatile Series

- EASY MOVE
- EASY FIT
- EASY RUN



340L
TANK



VERSATILE Series

EASY FIT RANGE



FEATURED HIGHLIGHTS

- **Easy fit design** for horizontal and vertical applications
- **Removeable pump system** for 'Easy installation and servicing'
- Hassle free **"Plug n' Play"** installation.
- Fits perfectly through ceiling "man-Holes"
- Constant **pressure** and **flow**
- **WRAS approved Tank**, that is non-corrosive, robust, and designed with built-in strengthening ribs.
- **Dry run protection** Controller with pressure gauge.
- **Back-up diaphragm** to compensate for small leaks or drips in the hydraulic system.
- **Shut-off valve** as standard.
- Made with Eco-friendly materials and products.
- Aquabox Systems **2 Year limited warranty**.

The All NEW **Aquabox Systems - Versatile Series** for all your Domestic and Commercial clean water applications.

It's sleek compact system designed for storing clean and potable water with reliable constant pressure.

The **Aquabox Systems - Versatile Series** makes plumbing easy, hassle free, creating more space and less noise for greater comfort.

Lowara Scuba Series

The Lowara SC205 Scuba, is a 5" Close Coupled Multistage submersible pump (0.55kw) with Electrical motor cooled by pumped liquid which is WRAS compliant.

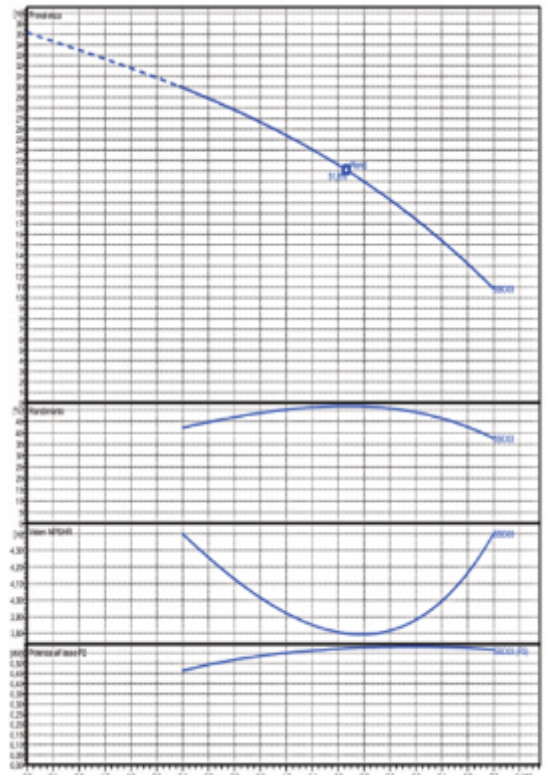
The Lowara Scuba can be installed in vertical and horizontal positions. The pumps low noise tolerance, stainless steel structure, "Double Mechanical Seals" system and engineered motor is designed for constant use.

Aquabox Systems Controller

The Aquabox Systems Controller starts the pump at the minimum water request and protects against dry running.

Inspection-able and integrated check valve, integrated pressure gauge, smart auto-reset and anti-seize function are standard.

Compact, adjustable, smart.



Additional Accessories

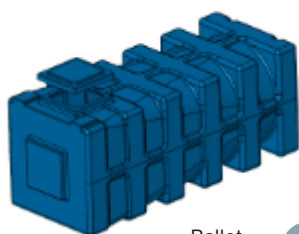
- Tank drip trays
- Tank insulation jackets
- Tank acoustic mats
- 8lt In/Out pressure tanks

ORDERING INFORMATION

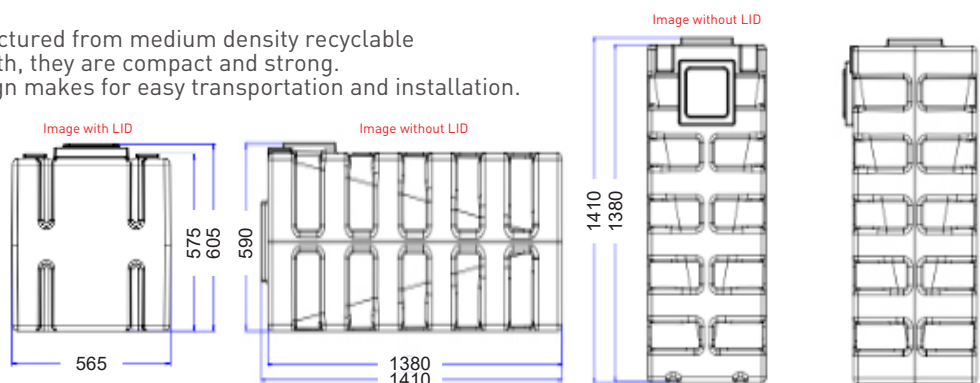
Model	Capacity Ltr	m ³ /h (min)	m ³ /h (max)	Head (Qmin)	Head (Qmax)	Bar	kW	HP	Volt	Phase
Versatile Horizontal Series®										
VSH001	340	2.4	7.2	29.9	10.8	3	0.55	0.75	220-240	1
Versatile Vertical Series®										
VSV001	340	2.4	7.2	29.9	10.8	3	0.55	0.75	220-240	1

Versatile Series Tanks

The Versatile Series Tanks are manufactured from medium density recyclable polyethylene for endurance and strength, they are compact and strong. The Tanks light weight and stable design makes for easy transportation and installation.



Pallet Quantity: **4**



Note: Please allow 500mm clearance for Horizontal tanks and 750mm clearance for Vertical tanks for easy pump removal.



All Units and or Trays must be installed on a perfectly clean and even platform. The base of this platform must be of a suitable strength to evenly support the full weight of the unit when it is full to its capacity of water depending on the tank size.